

EXTERNAL ROAD DATA

TOPSOIL = 0,938.39 M3
 CLAY = 10,946.94 M3
 TOTAL CUT = 19,885.33 M3
 TOTAL FILL = 30,268.32 M3

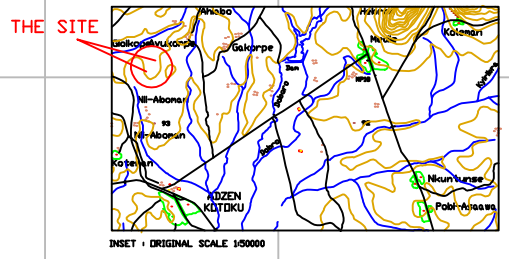
AC - 10 DOUBLE SEALING
 SHOULDER = 739.24 M3
 AGGBASE = 0,749.69 M3
 TOTAL LENGTH OF ROAD KERBS = 3,644.0 M
 TOTAL LENGTH OF GARDEN KERBS = 1,822.0 M

INTERNAL ROADS/DRAINAGE DATA

ROAD A = 245.0M
 ROAD B = 202.0M
 ROAD C = 278.0M
 ROAD D = 140.0M
 ROAD E = 198.0M
 ROAD F = 198.0M
 TOTAL INTERNAL ROADS = 1,261.0M
 TOTAL DRAIN LENGTH = 2596.6M
 TOTAL LENGTH OF ROAD KERBS = 2596.6M

TOTAL AREA COVERED BY INTERNAL ROAD NETWORK = 13,200 M2
 VOLUME OF CONCRETE PROPOSED FOR INTERNAL ROADS (150MM) = 1,980 M3
 TOTAL FLOOR AREA FOR SORTING & RECYCLING = 19,010.56 M2
 TOTAL CONCRETE FOR SORTING AND RECYCLING FACTORY FLOORS = 3,802.13 M3
 TOTAL AREA BOUNDED BY RED LINE PERIMETER = 59,843.87 M2
 TOTAL FLOOR AREA OF OFFICES = 921.69 M2
 TOTAL AREA OF PROPOSED PAVED AREA = 2,4711.62 M2

— CUT_CATCHLINE
 — FILL_CATCHLINE
 — ORIGINAL_SURFACE



DRAWING TITLE COMPOSITE LAYOUT OF FACILITY WITH TOPOGRAPHIC AND DESIGN DETAILS			PROJECT TITLE COMPOST, RECYCLING AND SORTING PLANT FACILITY			APPROVED BY: PROJECT COORDINATOR		DATE	CLIENT ZOOMLION GH. LTD.
SCALE	SURVEYED BY	CONSULTANTS/CONTRACTORS GEDDATA ENGINEERING LTD	LOCATION ON THE ACCRA NSAWAM ROAD ADJEN KOTOKU NEAR MEDIE			DESIGNED BY: SITE ENGINEER		DATE	
DWG NO.	DESIGNED BY								
DATE	CHECKED BY								
CONTOUR ELEV. INT.	APPROVED BY								